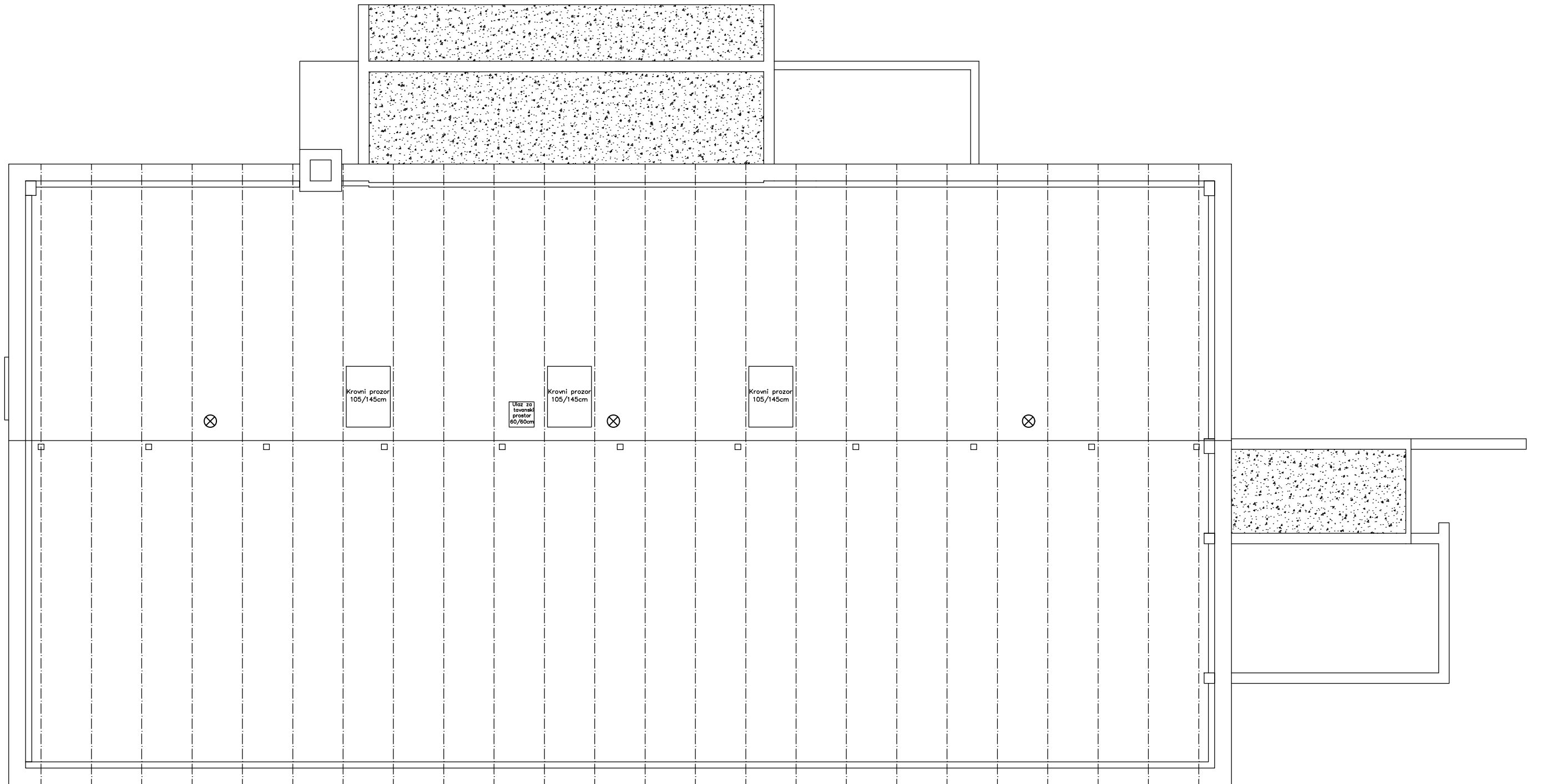
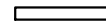







# TLOCRT KROVIŠTA



-  Fluo 2x36W
-  Fluo 1x36W
-  Fluo 4x18W
-  Žarulja
-  Žarulja u rasvjetnom stupu
-  Panik svjetiljka (ne mijenja se)

<b>NACRT:</b> POSTOJEĆE STANJE RASVJETE - POTKROVLJE		<b>PROJEKTANT:</b> GORAN JUSTINIĆ, mag.ing.el.	
<b>INVESTITOR:</b> GRAD NOVI VINODOLSKI		 GORAN JUSTINIĆ mag.ing.el.	
<b>GRAĐEVINA:</b> DV FIJOLICA - PROJEKT POVEĆANJA ENERGETSKE UČINKOVITOSTI		E 242 OVLASŦENI INŽENJER ELEKTROTEHNIKE	
<b>LOKACIJA:</b> NOVI VINODOLSKI, k.č.br. 3647/1, k.o. NOVI		<b>BROJ PROJEKTA:</b> GP-012/2017	<b>MJERILO:</b> 1:100
		<b>DATUM:</b> SIJEČANJ 2017.	<b>RBR NACRTA:</b> 3.

